

Native Hedgerow Mix (indicative)

<i>Crataegus monogyna</i> (Hawthorn)	35%
<i>Prunus spinosa</i> (Blackthorn)	20%
<i>Corylus avellana</i> (Hazel)	15%
<i>Ilex aquifolium</i> (Holly)	10%
<i>Sambucus nigra</i> (Elder)	10%
<i>Rosa canina</i> (Dog rose)	5%
<i>Cornus sanguinea</i> (Dogwood)	5%

Specimen Trees (indicative)

- Quercus robur* (Oak)
- Acer campestre* (Field Maple)
- Alnus glutinosa* (Alder)
- Fagus sylvatica* (Beech)

All planting along the southern boundary of the Site to have regard to Network Rail planting guidelines

Groundcover (indicative)

- Hedera helix* 'Green Ripple'
- Vinca minor* 'Gertrude jekyll'
- Ajuga reptans* 'Catlin's Giant'
- Rubus fruticosus* 'Betty Ashburner'
- Geranium* 'Rozanne'

Species-rich Grassland (indicative)

Emorsgate EM5 Meadow Mixture for Loamy Soils (or similar)

Species-rich Wet Grassland (indicative)

Emorsgate EM8 Meadow Mixture for Wetlands (or similar)

This drawing is the copyright of AXIS P.E.D Limited and may not be loaned, copied or reproduced in any way - or used for any offer, quote, tender or construction purposes without written consent of the company to do so

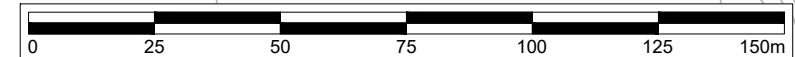
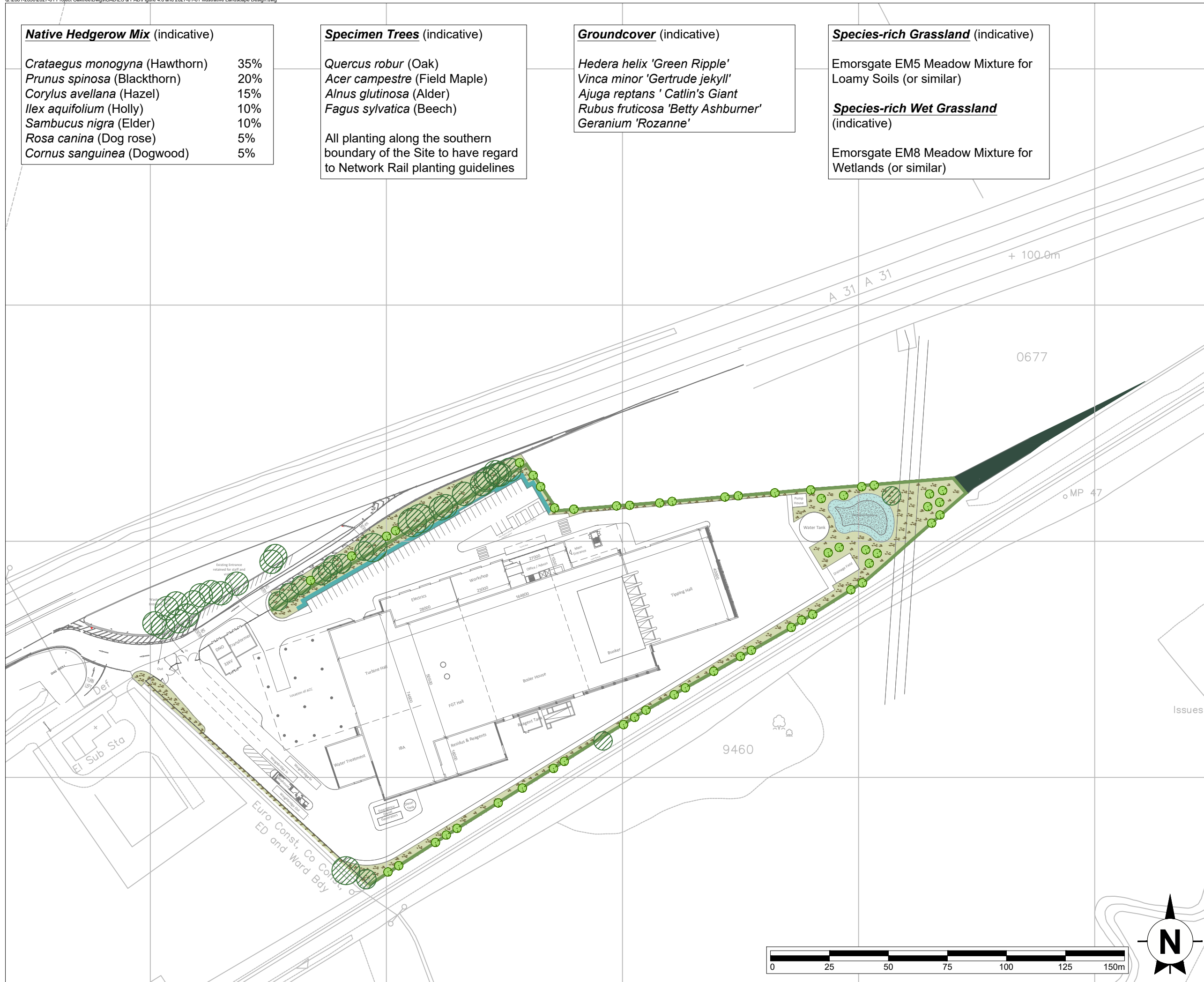
Follow any figured dimensions - do not scale for construction purposes. IF IN DOUBT ASK.

Revision History

Revision	Date

Key:

- Existing Vegetation (retained)
- Existing Tree (retained)
- Native Hedgerow
- Native Specimen Tree
- Groundcover
- Species-rich Grassland
- Species-rich Wet Grassland



Chester Office: West House Street Eton Chester CH4 8DH	South Manchester Office: Cavendish House 76 Water Lane Wilmslow SK9 6SL	axis 0844 8700 007 • www.axisped.co.uk
client: Veolia Environmental Services		
project: Alton Advanced Energy Recovery Facility		
drawing title: Illustrative Landscape Design		
date: April 2020	drawn by: AM	checked: AR
drawing number: 2627-01-01	status: For Planning	
scale(s): 1:1500@A3	rev: --	
planning environment design		